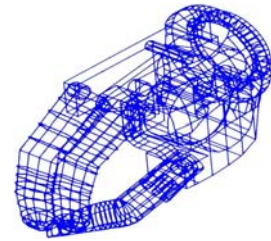




International Society for Prosthetics and Orthotics
United Kingdom National Member Society

Trent
International
Prosthetic
Symposium

2009



*... for all professionals involved with **upper**
limb prosthetics*



**Burleigh Court Conference Centre
Loughborough, UK**

18th to 20th May 2009

FINAL PROGRAMME



Your invitation to participate at TIPS 2009

The Organising Committee, in conjunction with ISPO UK NMS, cordially invites you to participate at TIPS 2009 – *the premier international event* dedicated to the management of upper extremity amputees and limb deficient children.

In response to increasing delegate numbers, TIPS 2009 moves to a new location - **Burleigh Court Residential Conference Centre** conveniently located in the heart of the Trent area, in the grounds of Loughborough University, only 8 miles from East Midlands Airport. Rail links, with regular train services, lead to other major UK airports including Birmingham, Heathrow and Gatwick. For travellers by car, this first class conference centre is situated just one mile from Junction 23 of the M1 and provides on-site secure car parking for all delegates.

With high specification meeting rooms, versatile exhibition space, luxury en-suite bedrooms, therapy, spa and leisure complex and award-winning cuisine, this superb venue undoubtedly complements the high quality conference and exhibition for which the **Trent International Prosthetic Symposium** is renowned. Full details, including a virtual tour of this unique residential conference centre, can be found at www.welcometoimago.com.

The final programme for the symposium is now complete and follows the traditional format of guest lectures and free papers, an exhibition and manufacturers' workshops. An additional feature this year will be the presentation of short clinical papers which develop solutions to challenges encountered in everyday practice. Instructional workshops are also offered on the Wednesday afternoon. Together with a lively evening social programme, the organising committee hopes TIPS 2009 will provide a multi-disciplinary forum with a wide range of opportunities for delegates to engage with rehabilitation professionals from across the globe.

GUEST SPEAKERS

John Miguez has over 18 years experience specialising in upper-limb prosthetic care. He is the founder of **Advanced Arm Dynamics**, one of America's leading providers of upper-extremity prosthetics. Since 2003 John has been leading a team of senior clinicians at the Walter Reed Army Medical Centre in Washington DC providing care for injured US soldiers from Iraq and Afghanistan. He is also involved in several research and development initiatives, working closely with upper-extremity component manufacturers on education, component refinement and design.

Kristin Gulick, Occupational Therapist and Certified Hand Therapist, has over twenty years' specialist experience and is renowned for her unique and intense approach which has benefitted patients across the USA. Kristin is committed to sharing her knowledge and wealth of experience through training programmes for community therapists involved in local care of patients with upper limb amputation. Together with Katie Yancosek, MS, OTR, CHT, she has recently published a handwriting manual for adults who are changing hand dominance.

Dr Stephanie Lacour is a Research Fellow of the Royal Society and King's College, Cambridge and currently leading interdisciplinary research to integrate electronic, transducing and biologic functions on soft and compliant substrates. She is a graduate of the Institut National des Sciences Appliquées (INSA) in Lyon and also undertook research on thin film electronics on polymeric substrates and stretchable electronics at Princeton University, NJ between 2001 and 2005. Stephanie received the Young Innovator award, TR35, from MIT Technology Review in 2006.

Frank Letch is famous for his "Feet First" lectures, polished and entertaining speeches (and demonstrations!) and tireless work raising awareness and support for REACH, the UK's national organisation providing support and advice for children with hand or arm deficiencies.

CONFERENCE PROGRAMME

Monday 18 May

- 0830 – 1000 hrs **Registration & Refreshments**
- 1000 – 1015 hrs **Welcome** *Bill Dykes, Conference Chair*
- 1015 – 1045 hrs **“Upper Extremity Prosthetics: State of the Science”**
Guest Speaker: John Miguez, Advanced Arm Dynamics, Oregon, USA
- 1045 – 1200 hrs **Free Paper Session** *Chair: H Sears/R Cooper*
“Towards multi-movement hand prostheses: combining adaptive classification with high precision socket”
M Winkler, OTW Orthopadietechnik Winkler, Minden, Germany
“A voice-controlled prosthesis: test of a vocabulary and development of the prototype”
E Gruppioni, I.N.A.I.L. Prosthesis Centre, Vigorso di Budrio, Italy
“A use of rapid prototyping in prosthetics: wrist powered partial hand with multi-articulate jointed fingers”
A M P Clawson, Institute of Biomedical Engineering, University of New Brunswick, Canada
“Early partial hand patient outcomes utilising prodigits (myoelectric controlled prosthetic digits)”
K Lindborg, Touch Bionics, Livingston, UK
“Natural grasping: on the design of voluntary closing hand prostheses”
D H Plettenburg, Delft Institute of Prosthetics & Orthotics, Delft, The Netherlands
“A two degree of freedom powered prosthetic wrist controlled using pattern recognition of forearm EMG”
P Kyberd, Institute of Biomedical Engineering, University of New Brunswick, Canada
- 1200 – 1345 hrs **Exhibition & Lunch**
- 1345 – 1415hrs **“Prosthetic Electronic Skin: How to integrate sensory feedback on conformal artificial skin”**
Guest Speaker: Dr Stephanie Lacour, Cambridge Nanoscience Centre, University of Cambridge
- 1415 – 1530 hrs **Free Paper Session** *Chair: L Hermansson/M Leong*
“A cross sectional study of amputees at a Sydney amputee clinic”
J Davidson, Prince of Wales Hospital, Sydney, Australia
“The effect that a congenital upper limb deficiency has on a child and his/her parent(s). Does a prosthesis help?”
M Punchard, Exeter Mobility Centre, Exeter, UK
“Management of musculo-skeletal symptoms of the contralateral limb in upper limb amputees”
S Sooriakumaran, Roehampton Rehabilitation Centre, London, UK
“Does silicone partial hand prosthesis improve ability to work?”
H Burger, Institute for Rehabilitation, Ljubljana, Republic of Slovenia
“A service evaluation of currently prescribed cosmetic gloves and consequent implementation of Regal gloves for upper limb prostheses”
M Hewitson & A Silitoe, SMART Centre, Astley Ainslie Hospital, Edinburgh, UK
“From activity to participation – a case presentation”
Z Pihlar, Institute for Rehabilitation, Ljubljana, Republic of Slovenia
“Audit of the outcome of hypnosis as a treatment of Phantom Limb Pain”
M W Li Tyng, Specialist Mobility Rehabilitation Centre, Preston, UK
- 1530 – 1615 hrs **Exhibition & Refreshments**
- 1615 – 1730 hrs **Free Paper Session** *Chair: R Luff/W Dykes*
“Use of an ITAP implant for prosthetic reconstruction of a transhumeral amputee”
N Kang, Department of Plastic Surgery, Royal Free Hospital NHS Trust, London, UK
“Clinical experience with the first upper limb ITAP recipient”
L Marks & J Rendell, Stanmore Disablement Services Centre, Stanmore, UK
“Prosthetic management of a transhumeral amputee with an ITAP insertion”
N Pretty, Limb Fitting Centre, Royal National Orthopaedic Hospital, Stanmore, UK
“The role of physiotherapy within the management of patients with upper limb loss or absence in a regional rehabilitation centre in the UK”
M J R Cole, Roehampton Rehabilitation Centre, London, UK
“Clinical Gait Analysis of Upper Extremity Amputees”
D R W May, Kings College Hospital Rehabilitation Centre, London, UK
- 1800 hrs **Exhibition Closes**
- 1900 hrs **BBQ & Cocktail Reception**

Tuesday 19 May

0800 – 0900 hrs **Registration & Refreshments**

0900 – 0930 hrs ***“The Ultimate Challenge”***
Guest Speaker: Kristin Gulick, OTR/L, CHT, Oregon, USA

0930 – 1030 hrs **Free Paper Session** *Chair: K McCrea/J Ronald*

“Elbows and wrist innovations to advance function”

H H Sears, Motion Control Inc., Salt Lake City, Utah, USA

“Doctor, why can’t I have an i-Limb?”

S Sooriakumaran, Roehampton Rehabilitation Centre, London, UK

“Properties of goal-directed movements with upper extremity prostheses”

H Bouwsema, Centre for Human Movement Sciences, University of Groningen, The Netherlands

“The assessment of capacity for myoelectric control: development of standardized activities”

H Lindner, Centre for Rehabilitation Research, Orebro, Sweden

“Case study illustrating multi-disciplinary team working to achieve powered wheelchair control for a patient with a spinal injury and upper limb amputation”

K Cook, Prosthetic Centre Disablement Services Centre, Southmead Hospital, Bristol, UK

“Home modifications/adaptations”

C Ragno, Center for Arm Amputees, Red Cross Hospital, Stockholm, Sweden

1030 – 1115 hrs **Exhibition & Refreshments**

1115 – 1215 hrs **Free Paper Session** *Chair: to be advised*

“Identifying the outcomes of upper prosthetic limb rehabilitation and their predictors: the patients’ and rehabilitation professionals’ perspective”

S NiMhurchadha, School of Nursing, Dublin City University, Dublin, Ireland

“Creating an informational interactive DVD resource for children with congenital limb deficiency and amputations through audit and patient and public involvement (PPI)”

L Kirby, Specialist Mobility Rehabilitation Centre, Preston, UK

“Family picnics with children after upper limb amputation”

D Brezovar, Institute for Rehabilitation, Ljubljana, Republic of Slovenia

“Training with cosmetic prosthesis”

M Nilseryd, Center for Arm Amputees, Red Cross Hospital, Stockholm, Sweden

“Clinical experiences of mirror training”

C Ragno, Center for Arm Amputees, Red Cross Hospital, Stockholm, Sweden

“EX-Center, team approach”

A Stockselius & C Ragno, EX-Centre, Red Cross Hospital, Stockholm, Sweden

1215 – 1415 hrs **Exhibition & Lunch** *(Exhibition closes 1415 hrs)*

1415 – 1445 hrs **Title to be confirmed**
Guest Speaker: Frank Letch, REACH

1445 – 1545 hrs **Manufacturers’ Workshops**

(a) Motion Control Inc: “Advances in elbow, TD and wrists for upper extremity function”
Presenter: Harold Sears

(b) Otto Bock Healthcare PLC: “PAULA: Technology for evaluation, fitting and training for upper limb prosthetics”
Presenters: Martin Werhle & Ken Hurst

(c) RSL Steeper Ltd: “Achieving goals and satisfying ADL requirements”
Presenters: John Ronald and Bruce Rattray

(d) Touch Bionics: “The i-LIMB Hand”
Presenters: to be confirmed

(e) Polymer Systems Technology Ltd: “Silicone Processing Techniques”
Presenter: Derek Williams-Wynn

1545 – 1600 hrs **Refreshments**

1600 – 1700 hrs **Manufacturers’ Workshops**

(e) Motion Control Inc: “Advances in elbow, TD and wrists for upper extremity function”
Presenter: Harold Sears

(f) Otto Bock Healthcare PLC: “PAULA: Technology for evaluation, fitting and training for upper limb prosthetics”
Presenters: Martin Werhle & Ken Hurst

(g) RSL Steeper Ltd: “Achieving goals and satisfying ADL requirements”
Presenters: John Ronald and Bruce Rattray

(h) Touch Bionics: “The i-LIMB Hand”
Presenters: to be confirmed

(i) Polymer Systems Technology Ltd: “Silicone Processing Techniques”
Presenter: Derek Williams-Wynn

2000 hrs **Conference Dinner**

Wednesday 20 May0830 – 0900 hrs **Registration & Refreshments**0090 – 1000 hrs **Free Paper Session***Chair: to be confirmed****“Management of transhumeral amputation and contralateral hemiplegia in a child”***

E McGilloway, Roehampton Rehabilitation Centre, London, UK

“Rehabilitation of a patient with bilateral amputation due to epidermolysis bullosa – a case report”

M Burgar, Institute for Rehabilitation, Ljubljana, Republic of Slovenia

“Functioning with a congenital reduction deficiency of the upper extremity: the role of adaptations”

I van Wijk, Rehabilitation Centre De Hoogstraat, Utrecht, The Netherlands

“Custom-made silicone liner prosthesis for congenital infant: a case study”

V B MacEachen, WestMARC, Southern General Hospital, Glasgow, UK

“Challenges of a Trans radial”

J Ronald, Nottingham, UK

“Analysing the relationship between socket design and electrode contact with myoelectric prostheses functionality: a prosthesis user questionnaire”

J Head, University of Salford, Salford, UK

“Changes in prehension over training with a myoelectric simulator”

R Bongers, Center for Human Movement Sciences, University of Groningen, The Netherlands

“Effect of a multifunctional prosthetic hand on hand functioning, activity, and psychosocial adjustment”

L Hermansson, Centre for Rehabilitation Research, Orebro, Sweden

1000 – 1030 hrs **Evidenced Based Practice****Guest Speaker:** to be confirmed1030 – 1100 hrs **Refreshments**1100 – 1200 hrs **Free Paper Session***Chair: to be confirmed****“Upper Limb Prosthetic Outcome Measures (ULPOM) Group”***

P Kyberd, Institute of Biomedical Engineering, University of New Brunswick, Canada

“A new active shoulder prosthesis: from the design to the first clinical application”

E Gruppioni, I.N.A.I.L., Prosthesis Centre, Vigorso di Budrio, Italy

“Feasibility of activity monitoring for upper limb prosthetic evaluation”

M Sobuh, University of Salford, Salford, UK

“Use of rapid prototyping technology in producing silicone partial hand prostheses”

T Maver, Institute for Rehabilitation, Ljubljana, Republic of Slovenia

“High definition silicone cosmesis and upper limb absence: a user’s questionnaire”

R Beltran, Roehampton Rehabilitation Centre, London, UK

“Light-weight full arm cosmetic prostheses for high level amputees”

N Hillsdon, Roehampton Rehabilitation Centre, London, UK

1200 – 1300 hrs **Lunch**1300 – 1400 hrs **Instructional Workshops*****(1) “Building blocks for a prosthetic training program”*** - Kristin Gulick, OTR/L, CHT, Org, USA***(2) “Harnessing and control techniques”*** - Michael Fillauer, The Fillauer Companies Inc.,

Tennessee, USA; Debra Latour, M.Ed., OTR/L, Shriners Hospitals for Children, MA, USA

(3) “The Evolution of Upper Limb Prosthetic Socket Design” and “Management of Bilateral***Upper Limb Deficient Individual”*** John Miguelez, Advanced Arm Dynamics, Org, USA***(4) “Silicone – innovative solutions in upper extremity prosthetics”*** - Jiri Rosicky, Czech

Republic; Bob Watts, Dorset Orthopaedic, UK; Michael Schaefer, Germany

1400 – 1415 hrs **Refreshments**1415 – 1515 hrs **Instructional Workshops*****(5) “Building blocks for a prosthetic training program”*** - Kristin Gulick, OTR/L, CHT, Org, USA***(6) “Harnessing and control techniques”*** - Michael Fillauer, The Fillauer Companies Inc.,

Tennessee, USA; Debra Latour, M.Ed., OTR/L, Shriners Hospitals for Children, MA, USA

(7) “The Evolution of Upper Limb Prosthetic Socket Design” and “Management of Bilateral***Upper Limb Deficient Individual”*** John Miguelez, Advanced Arm Dynamics, Org, USA***(8) “Silicone – innovative solutions in upper extremity prosthetics”*** - Jiri Rosicky, Czech

Republic; Bob Watts, Dorset Orthopaedic, UK; Michael Schaefer, Germany

1515 – 1530 hrs **Prizegiving****Wind up****Symposium Closes**

MANUFACTURERS' WORKSHOPS

Five manufacturers' workshops will run concurrently on the afternoon of Tuesday 19 May with each workshop running twice to allow delegates the opportunity to attend a maximum of two workshops. Delegates should indicate their preferred choice of workshops on the enclosed registration form.

Manufacturer's Workshop 1:

Advances in elbow, TD & wrists for upper extremity function – Motion Control Inc

This workshop will deal with specifics and hands-on experience with new features in the U3+ Arm, including Dual Locking System, silent low power freeswing and compatibility with new TDs, such as the i-LIMB hand. Hands-on instruction in the user interface software, used with the new U3+ Arm as well as ProControl 2, and now with Bluetooth wireless connection to all MC systems. Delegates will have the opportunity to install the new software. In addition the workshop will deal with specifics and hands-on experience of the highly functional Motion Control Hand and Electric Terminal Device (ETD) including: flexion wrist, multi-flex wrist, in-hand wrist rotation as well as new battery options. Finally specifics and hands-on experience with the new Hybrid Utah Arm will be presented – adjustable Flexion Assist eases elbow flexion in this body-powered elbow, with myoelectric hand and wrist control, electric lock control and a wide variety of input sensors, and control options.

Manufacturer's Workshop 2:

PAULA: Technology for evaluation, fitting and training for upper limb prosthetics - Otto Bock Healthcare PLC

Presented by Martin Werhle and Ken Hurst, three workstations will demonstrate differing aspects of the new PAULA software. Delegates will be able to view myo testing, assistive socket design, component selection and full myo simulation of dynamic arm. The sessions will be instructive as well as interactive.

- 1 PAULA Workstation **MyoTest** – MyoTest with MyoBoy to find good signals at different levels (eg. transradial and transhumeral) and classify the myo signals to aid prescription.
- 2 PAULA Workstation **Socket Design** – will show the data capture and processing of photographs to create an electronic transradial test socket.
- 3 PAULA Workstation **MyoSimulation** – will simulate different component configurations on screen with the PAULA Software including children hand system, adult system and dynamic arm.

The sessions will include working with real prosthetic examples, with an overall goal of helping delegates to understand the ability of PAULA to progress through the assessment process without the need for actual components in their workshop or the need to take a conventional plastercast.

Manufacturer's Workshop 3:

Achieving goals and satisfying ADL requirements – RLS Steeper

Presented by John Ronald and Bruce Rattray. Allowing the user to achieve their goals and satisfy all their ADL requirements often warrants novel approaches and a variety of terminal devices. This workshop will focus on prescription choices that are available and a particular partial hand case study will be discussed giving an insight into the components chosen to satisfy the user's needs. Proceedings will be informal to encourage feedback and discussion and there will be the opportunity to discuss other challenging cases. Please feel free to bring descriptions/photographs on the day or forward in advance to Bruce Rattray (bruce.rattray@rehab.co.uk). In addition, new technology advancements will be discussed with a presentation focussing on how myo electric signals may be captured in patients utilising suction style liners.

Manufacturer's Workshop 4:

i-LIMB Hand – Touch Bionics

Since the release of the i-LIMB Hand in July 2007, more than 500 patients worldwide have been fitted with this most advanced prosthetic hand which has multiple advanced grip patterns similar to that of a human hand. The i-LIMB is the world's first microprocessor controlled, myo-electric hand with proportional control, five articulating digits and a user adjustable thumb which rotates 110 degrees. This gives the user a "palmar grip" which enables the user to have grasp and control which heretofore was not available. The i-LIMB Hand can lift 45 pounds and yet the articulating fingers produce a realistic movement naturally conforming to the shape of the objects. The workshop will cover basic grip patterns, new updates on the i-LIMB Hand (eg. small female hand), cosmesis, clinical background, patient training (OT protocol), patient study, service and support. This session will be geared towards prosthetists, OTs and hand therapists.

Manufacturer's Workshop 5:

Silicone Processing Techniques – Polymer Systems Technology Ltd.

Incorporating the use of a powerpoint presentation, this workshop intends to cover

- The choice of an HCR before proceeding to the actual silicone processing technique (ie what factors need to be considered such as the Shore hardness and durometer of the silicone)
- Preparation of the materials and the equipment
- How to adjust the work time and cure schedule as required
- Avoiding inhibition during the process
- Removing air and how to avoid bubbles during the silicone processing technique

INSTRUCTIONAL WORKSHOPS

Instructional workshops will also run concurrently during the afternoon of Wednesday 20 May, and each will be presented twice, again allowing delegates the opportunity to attend a maximum of two. Delegates should indicate their preferred choice of workshops on the enclosed delegate registration form.

Instructional Workshop 1:

Building blocks for a prosthetic training programme – Kristin Gulick, OTR/L, CHT

While every rehabilitation program needs to be client centered, it is helpful to have a basic treatment approach that can be modified to fit the individual client. Education about prosthetic training that most US occupational therapists receive in school is very limited and thus a therapist who prepares to provide treatment for a client with upper limb loss can feel less than prepared. This workshop will describe an approach to prosthetic training based on rehabilitation stages beginning with acute injury management progressing through pre-prosthetic>basic prosthetic>advanced prosthetic>community reintegration. Basic anatomy will be reviewed and terminology will be defined. Examples of patient cases using a variety of current technology will be shared. The information offered in this workshop will provide an example of an approach to the rehabilitation of a client with upper limb loss while also demonstrating how to tailor a program to address individual client needs and desires. Resources will be shared for future reference.

Instructional Workshop 2:

Silicone – innovative solutions in upper extremity prosthetics

Custom made silicone prostheses under the use of CAD systems – Jiri Rosicky, ING Corporation, Czech Republic

New possibilities in the treatment of children with myoelectric below-elbow prostheses - Bob Watts, Dorset Orthopaedic, UK

Silicone socket design in upper extremity prosthetics (finger to shoulder) - Michael Schaefer, Pohlig GmbH, Germany

Instructional Workshop 3:

Alternative Harnessing Techniques – Michael Fillauer, CPO, USA, The Fillauer Companies Inc.

This workshop will first review the biomechanical work sources for body power control with respect to power and excursion. Current harnessing techniques will be illustrated and evaluated based on patient acceptance, suspension and functionality. Alternative harnesses will also be discussed to address individual patient requirements and functional goals. Unique characteristics will be shared with the intent of increasing harnessing options.

The Anchor for UE Use – Debra Latour, M.Ed OTR/L, Shriners Hospitals for Children, USA

Traditionally, a body-powered prosthesis is activated by a figure-of-eight or nine harness system using the contralateral shoulder as the power source. Many users of this system complain of discomfort from the harness rubbing on the skin, especially in the axilla region. The “Anchor” system eliminates the need for a harness and the benefits of the system include increased comfort, improved cosmesis and decreased impingement at the axilla.

Instructional Workshop 4:

John Miguez, CP, FAAOP, Advanced Arm Dynamics, USA

The Evolution of Upper Limb Prosthetic Design Socket

Well thought out interface designs and careful consideration of residual limb presentation set the stage for patient success –maximizing range of motion, providing stability throughout daily activities and comfortably distributing the forces exerted on the residual limb during movement as well as suspension. In contrast, poor interface design will often drive people to abandon the prosthesis since many patients have an intact arm or hand. The foundation for all prosthetic procedures is a well designed and considerate prosthetic interface. This workshop will shed light on the many variables behind the evolution of upper limb interface design. Review of historical literature reveals two distinct and major influences – material science and the emerging upper limb prosthetic specialist.

Management of the Bilateral Upper Limb Deficient Individual

The patient population that requires bilateral upper extremity electrically-powered prosthetic intervention is limited, as are the practitioners who have sufficient experience to meet the patients' myriad of goals. Maximizing a patient's rehabilitation potential involves several critical success factors. Formation of a rehabilitation plan via a team approach ensures that all aspects of care are addressed simultaneously and is essential to a positive result which includes significant improvement in function and long-term prosthetic use. Essential in the formation and execution of successful prosthetic rehabilitation is the knowledge of design theory. Design theory takes into consideration volume containment, suspension, comfort, range of motion, component considerations, stabilization, anatomical contouring, and cosmesis. This knowledge allows the team to select the appropriate interface design, componentry, and control schemes that best suit the patient's level of amputation, skin, tissue, musculature condition, range of motion, learning ability and desire, and vocational and avocational goals. While knowledge of design theory in itself does not guarantee successful prosthetic rehabilitation, a lack of knowledge can often overshadow the contributions of the rehabilitation team. This workshop will detail a protocol to address the critical factors that should be considered when bilateral upper extremity electrically-powered prostheses are prescribed.

EXHIBITION

Delegates are strongly encouraged to visit the commercial exhibition. At the time of print, the following exhibitors have confirmed their attendance: Bentley Creative Chemicals Ltd, Motion Control Inc, Fillauer, Centri AB, Ortho Europe Ltd, Otto Bock Healthcare plc,; RSL Steeper Ltd, Realistic Prosthetics, REACH, Stanmore Implants, Touch Bionics, University of Strathclyde.

SOCIAL PROGRAMME

Delegates are encouraged to participate in the conference social programme, including the Monday evening Barbeque and Cocktail Reception and Tuesday evening Conference Dinner, sponsored by Otto Bock Healthcare PLC. Details of how to book tickets for each event are included on the enclosed registration form.

REGISTRATION

Delegates wishing to register for TIPS 2009 should complete the enclosed registration form and return it to the TIPS 2009 Organising Committee at ISPO UK NMS Secretariat, PO Box 2781, Glasgow, G61 3YL. Registration forms can also be downloaded from the Symposium website at www.ispo.org.uk. Early bird registration rates are available until Friday 17th April with additional reduced rates available to ISPO members. A copy of the ISPO membership application form can be downloaded from the website at www.ispo.org.uk

ACCOMMODATION

Burleigh Court offers a range of quality en-suite bedrooms at specially negotiated rates for conference delegates. All rooms offer hospitality tray, hairdryer, telephone, radio, messaging service and in-house movie channel. To book accommodation, please telephone the Burleigh Court Accommodation Reservations at ++ 44 (0) 1509 228122 or ++ 44 (0) 1509 228104 (e-mail: beds@welcometoimago.com) and quote reference #54794. All residents have full access to the restaurant, bar and lounge facilities as well as use of the Leisure Club and Spa Complex, *Burleigh Springs*, comprising a 15m swimming pool, sauna, whirlpool spa, steam room and fully equipped gymnasium. Secure on-site car parking is available to all delegates.

* Room rates based on single occupancy:-

Lodge Room (Room Only) £59.00

Standard Room (Bed & Breakfast) £102.00

Lodge Room (Bed & Breakfast) – £69.50

Executive Room (Bed & Breakfast) - £112.00

TRAVEL

By Air

Burleigh Court is just 8 miles from East Midlands Airport (www.eastmidlandsairport.com) and convenient for Birmingham International Airport (www.bhx.co.uk) via the M42. Rail links also available from Loughborough Rail Station to London Heathrow and Gatwick.

By Car

Leave junction 23 of the M1, taking the A512 Ashby Road to Loughborough. At the first roundabout, turn right into Holywell Way (signposted for Burleigh Court) and Holywell Park). Turn left at the next roundabout and enter Loughborough University Campus using the West Entrance. Take the first right after the gatehouse into Burleigh Court Park.

Satellite Navigation

Type “Holywell Way, Loughborough” into your satellite navigation system. (NB postcodes for imago and Loughborough University will not take you to your required destination).

By Train

Loughborough main station is located only 3 miles from Burleigh Court. Regular intercity services operate from London St Pancras direct to Loughborough. The conference centre is a 10 minute taxi ride from the station or 30 minutes using the University Shuttle Bus service.

By Bus

The University Shuttle Bus, operated by Kinchbus, runs between the university and Loughborough train station, with a service running every 10 minutes

FURTHER INFORMATION

Full details of the conference, together with regular updates, are available on the Symposium website at www.ispo.org.uk or by contacting Irene Cameron at ISPO UK NMS Secretariat, PO Box 2781, Glasgow, G61 3YL, T/F: ++ 44 (0)141 560 4092 E: info@ispo.org.uk W: www.ispo.org.uk